

Workstation for SAP

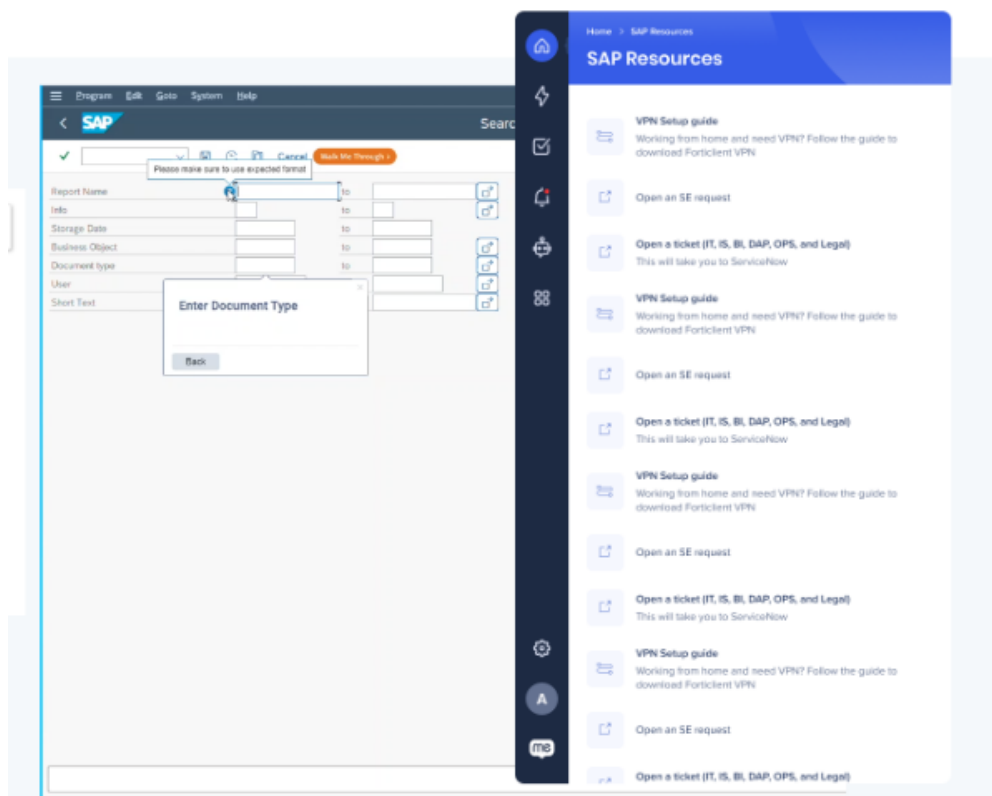
Brief Overview

SAP ECC is an enterprise resource planning software that incorporates the key business functions of an organization. As one of the worlds largest ERP applications, it is a valuable key element for many businesses, and the employee's ability to use this ERP with ease is vitally important.

Employees dealing with a complicated UI that contains numerous fields can get confused, potentially leading to costly errors or time-consuming data entry.

This is where WalkMe comes in! Workstation contextual in-app guidance for SAP ECC enables WalkMe to offer **guidance on the Desktop SAP ECC to the web instance of SAP S4HANA.**

WalkMe directs users to complete necessary tasks on either desktop or web, simplifying the migration process while driving employee adoption.



Architecture

In addition to Workstation out-of-the-box capabilities, Workstation for SAP ECC provides Element Capturing capabilities and features and supports:

- Contextual Guidance
- On-Screen Element based Rule
- SmartTips
- Launchers

UI Change Tracking Mechanism (re-evaluate):

- Workstation re-evaluates SAP ECC GUI's UI every 5000ms (5 seconds)

SAP Resources Widget

The SAP Resources widget on the Workstation Electron homepage allows SAP ECC users to quickly access relevant SAP ECC content.

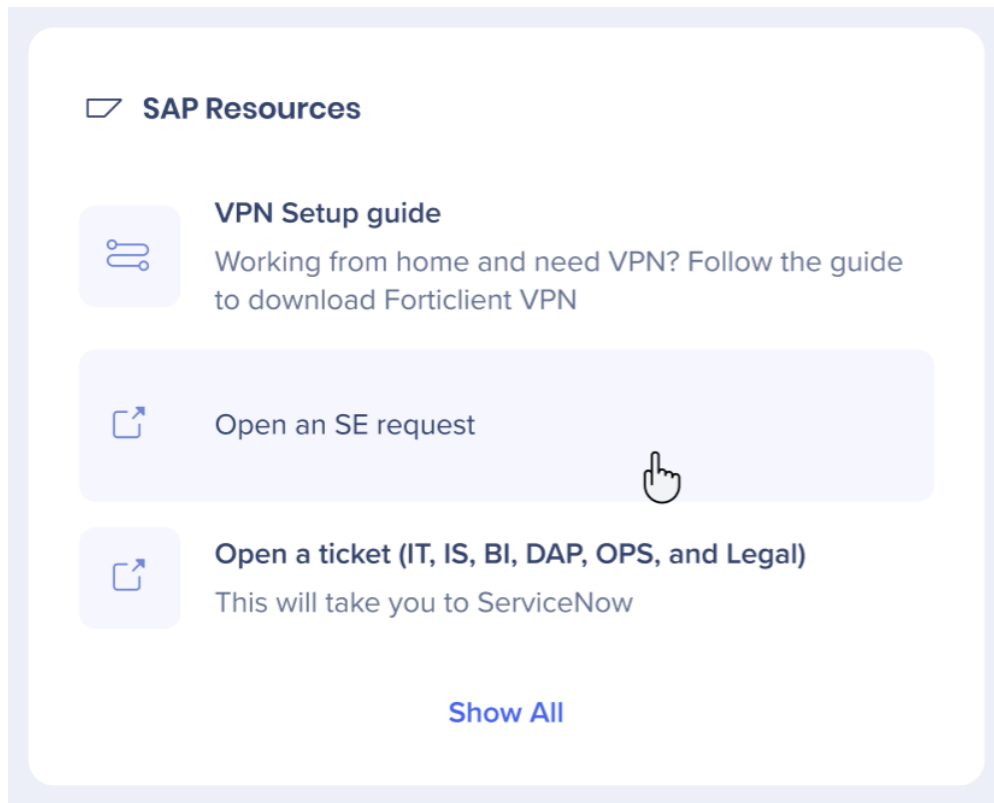
The SAP resources widget will automatically appear on Workstation if the following three conditions are met:

1. The user has SAP ECC on their desktop
2. There is a tab in the Workstation [Content Manager](#) called SAP
3. There is at least one item under the SAP collection in the Content Manager

Click **Show All** at the bottom of the widget to expand the widget and see all available SAP ECC resources.

SAP must be running

To open a resource for SAP ECC, SAP must already be running on the desktop. If you click a resource and SAP isn't running, then an error will appear requesting you to open SAP.



Limitations

Smart Walk-Thrus

- Some elements do not work with with TEXT triggers, only NEXT
- StartPoints are not supported

SmartTips

- At this time no Z-index exists with deep integration so just be aware that SmartTips will bleed through balloons!
- Use SmartTips sparingly, OSE or multiple OSE rules will typically be your ST Set rules - too many of these can cause a performance impact, we noticed this with 36 ST Sets
- It has been noticed that SmartTips can take some time to load when they are within popups (there are lots of popups within SAP)

Launchers

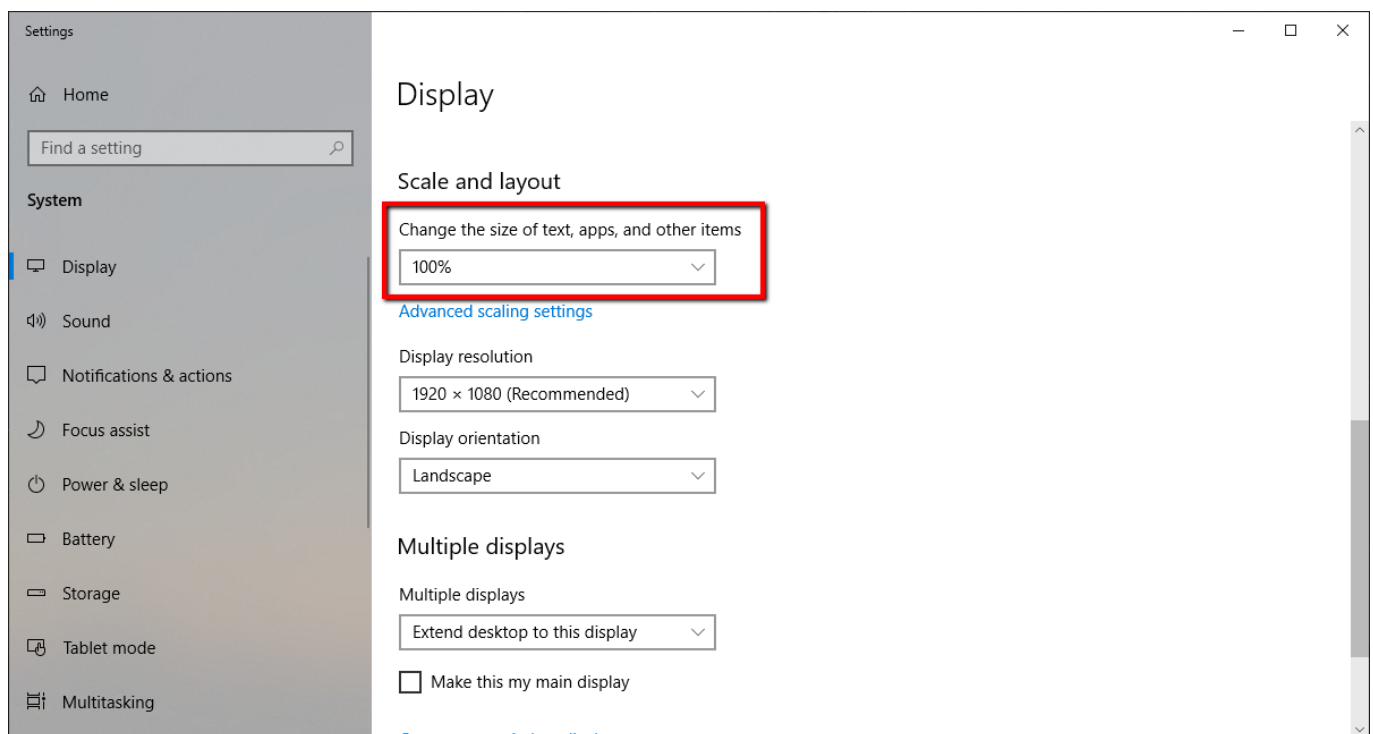
- Launchers **do not** support customization, this includes text within the Launchers

Widget

- Attaching the widget to the edge of the screen at least means the widget is available/visible no matter how many SAP windows they have open
- If using edge of screen placement, consider adding a rule to make the widget appear only when SAP is an active window – by doing this the widget disappears when users are working outside of SAP which avoids the widget from covering scrollbars on other applications

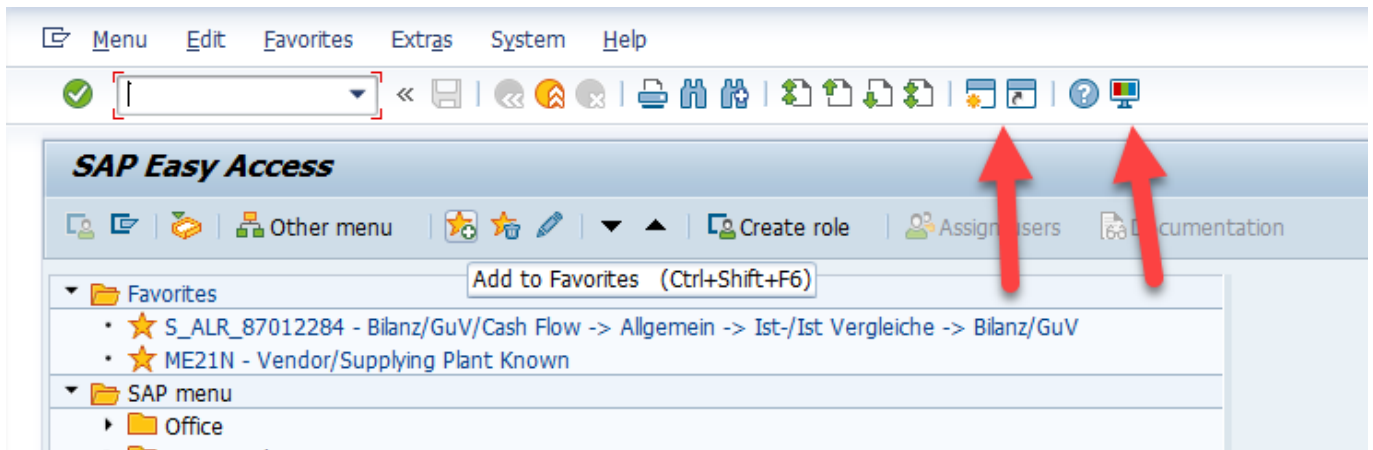
Element Capturing - General

- Capturing must be done with 100% text size (This is required only for content builders and end-users don't need to change their setting.)

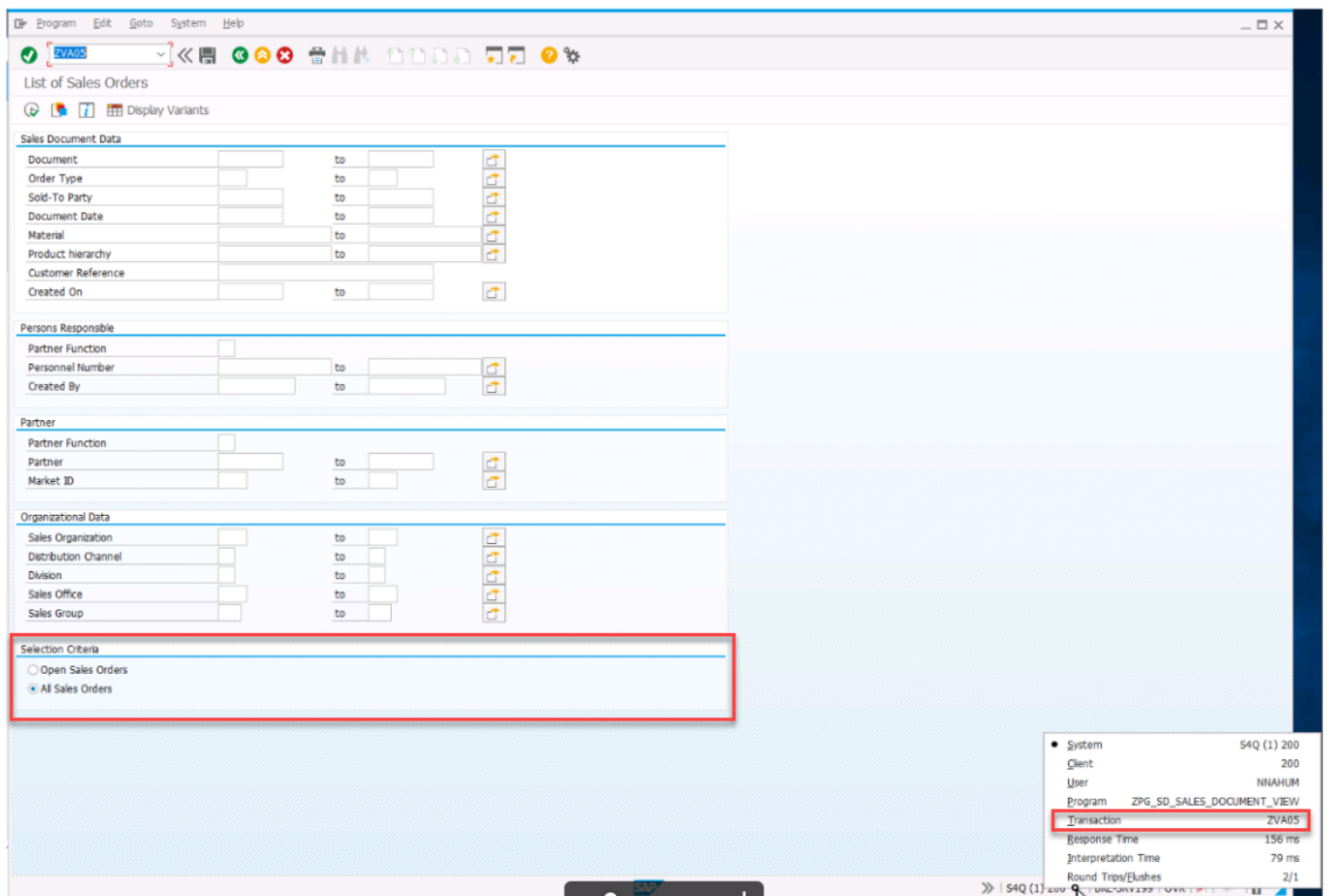


Element Selection

- Element selection works most of the time but you are likely to find areas where it does not find what you're looking for, in these cases try to attach to the nearest element and manually adjust location
- A common area where element selection does not work is table headers, in this cases select the cell just below the table header and manually adjust the balloon location

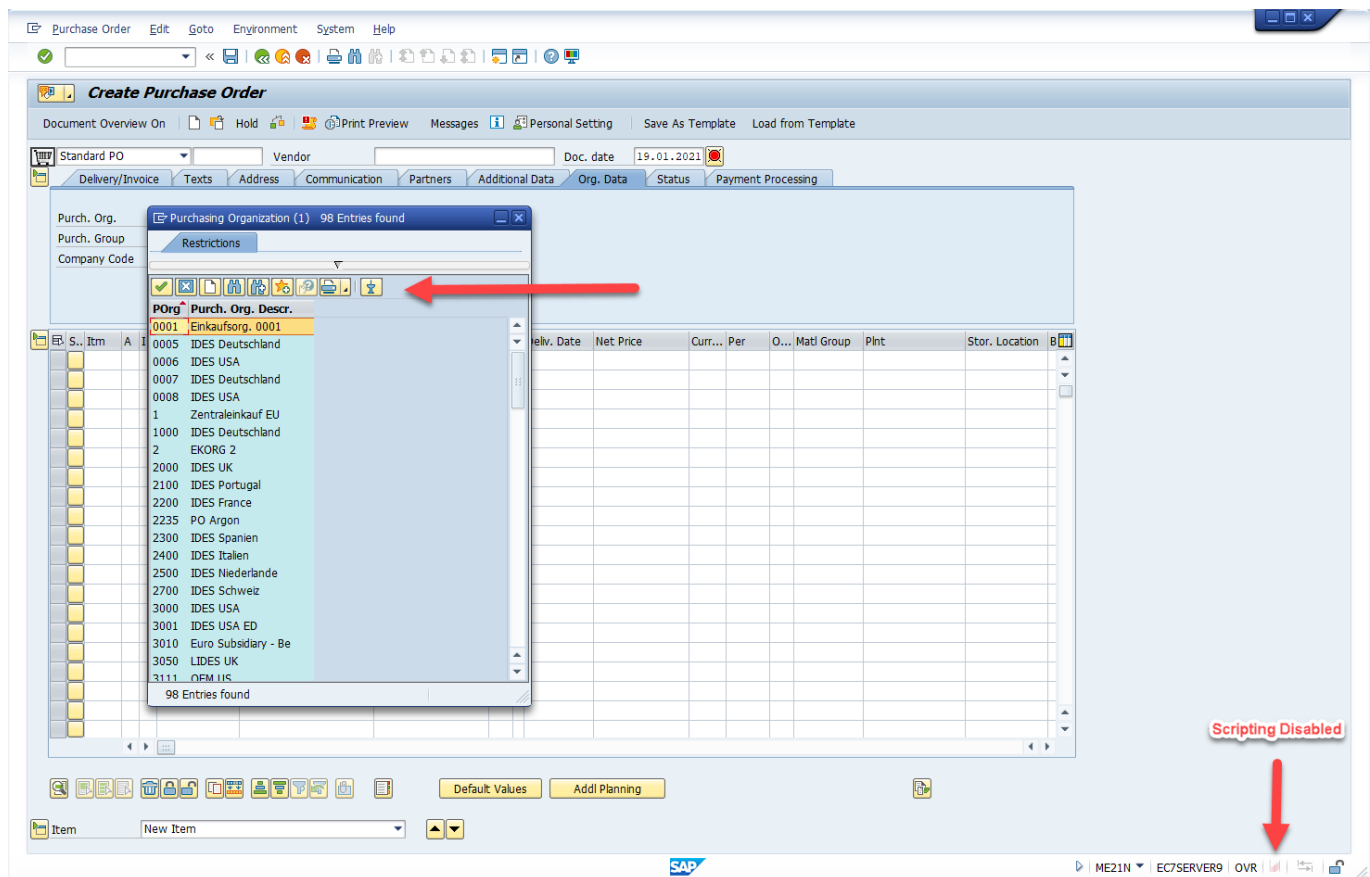


Another area that can't be captured is the *Selection Criteria* in transaction ZVA05:



SAP Popup UI Changes When Scripting is Enabled

- When scripting is enabled the fonts in popups might change and the buttons will move from the top of the popup to the bottom and some buttons might be excluded



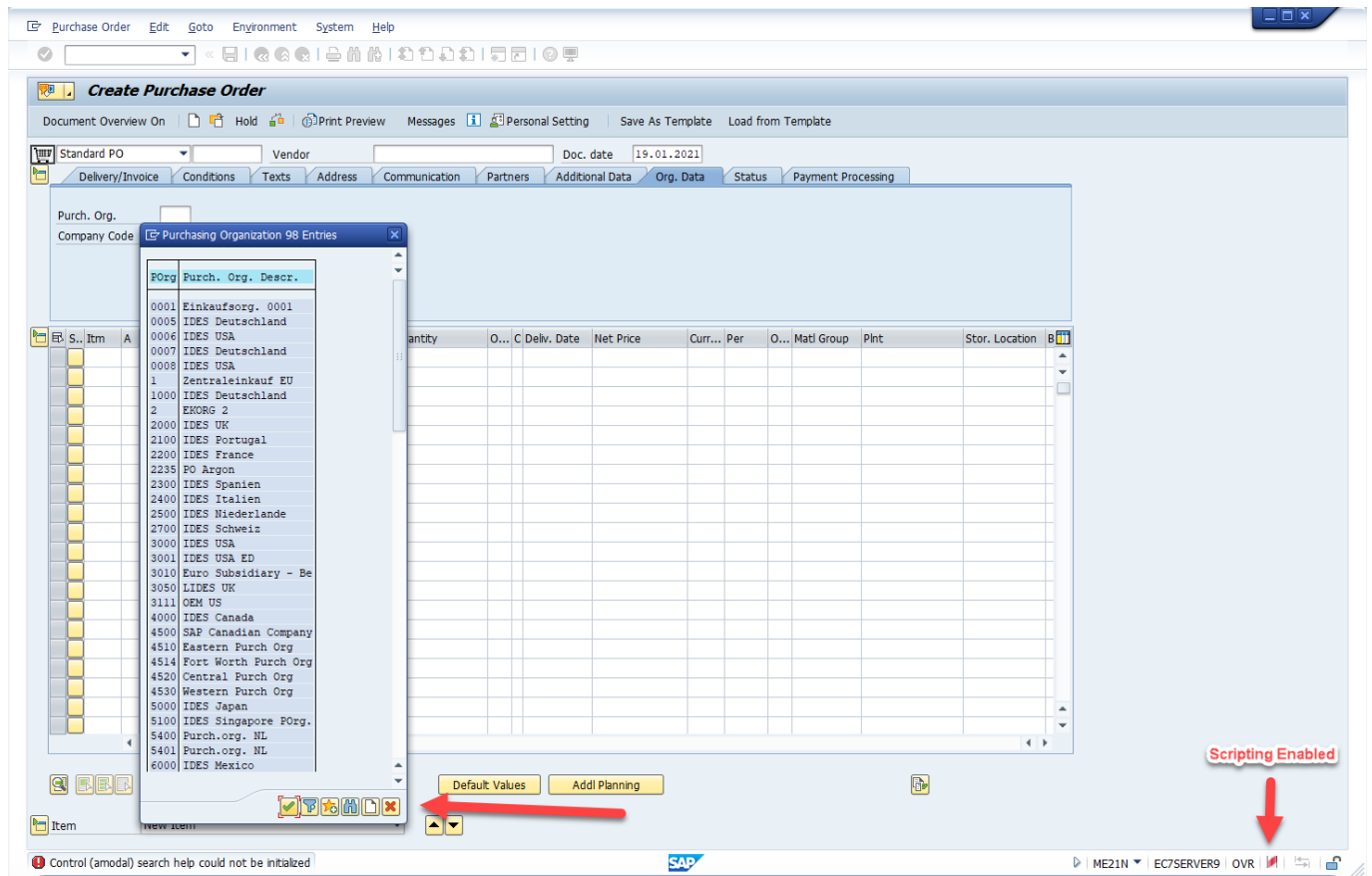
The screenshot shows the SAP 'Create Purchase Order' (ME21N) transaction. A red arrow points to the 'Purchasing Organization' selection pop-up window, which lists various purchasing organizations. Another red arrow points to a 'Scripting Disabled' message in the bottom right corner of the interface.

Annotations:

- Red arrow pointing to the 'Purchasing Organization' selection pop-up window.
- Red arrow pointing to the 'Scripting Disabled' message in the bottom right corner.

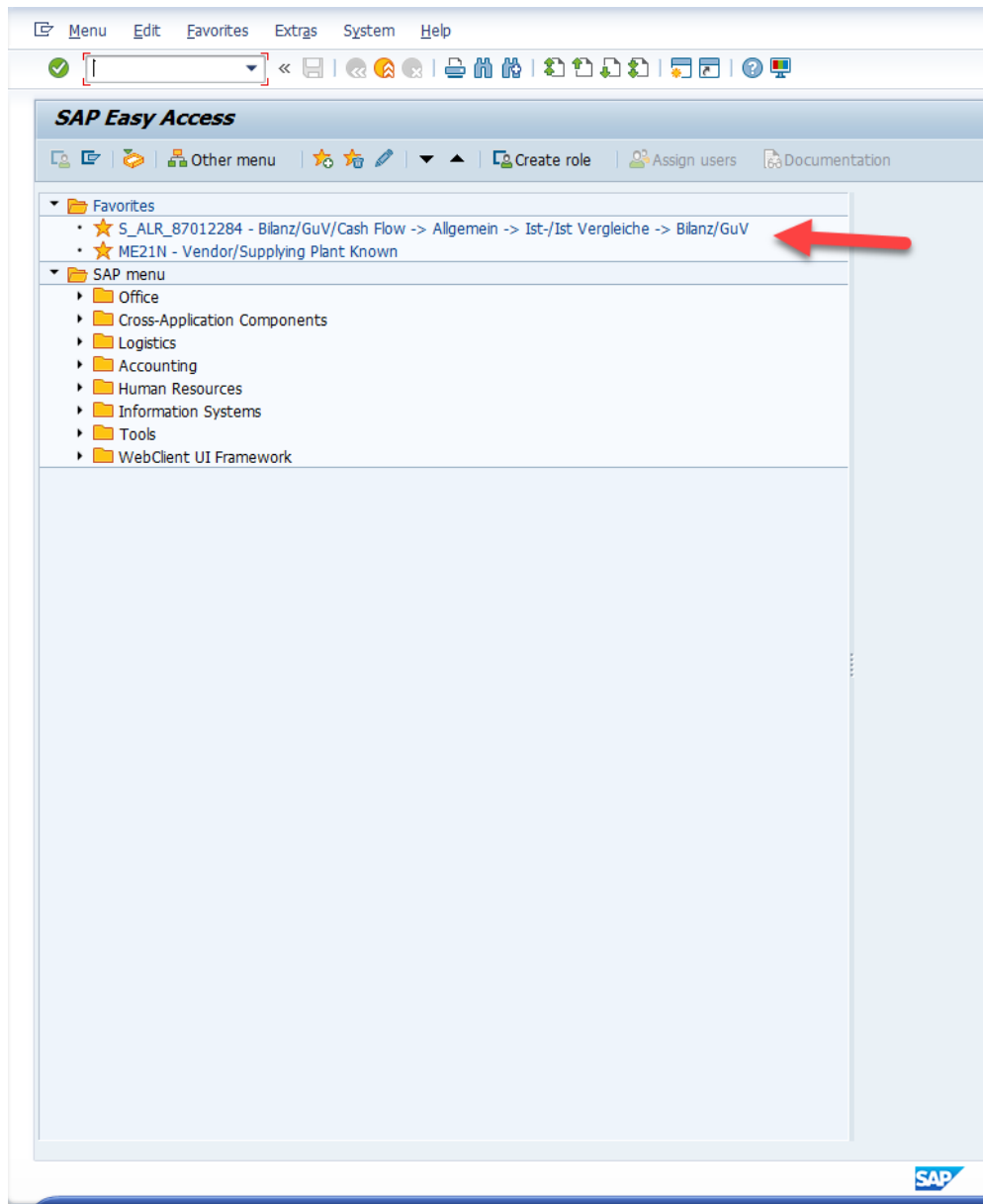
Table: Purchasing Organization (1) 98 Entries found

Purch. Org.	Purch. Group	Company Code
0001	Einkaufsorg. 0001	
0005	IDES Deutschland	
0006	IDES USA	
0007	IDES Deutschland	
0008	IDES USA	
1	Zentraleinkauf EU	
1000	IDES Deutschland	
2	EKORG 2	
2000	IDES UK	
2100	IDES Portugal	
2200	IDES France	
2235	PO Argon	
2300	IDES Spanien	
2400	IDES Italien	
2500	IDES Niederlande	
2700	IDES Schweiz	
3000	IDES USA	
3001	IDES USA ED	
3010	Euro Subsidiary - Be	
3050	LIDES UK	
3111	OEM IIS	

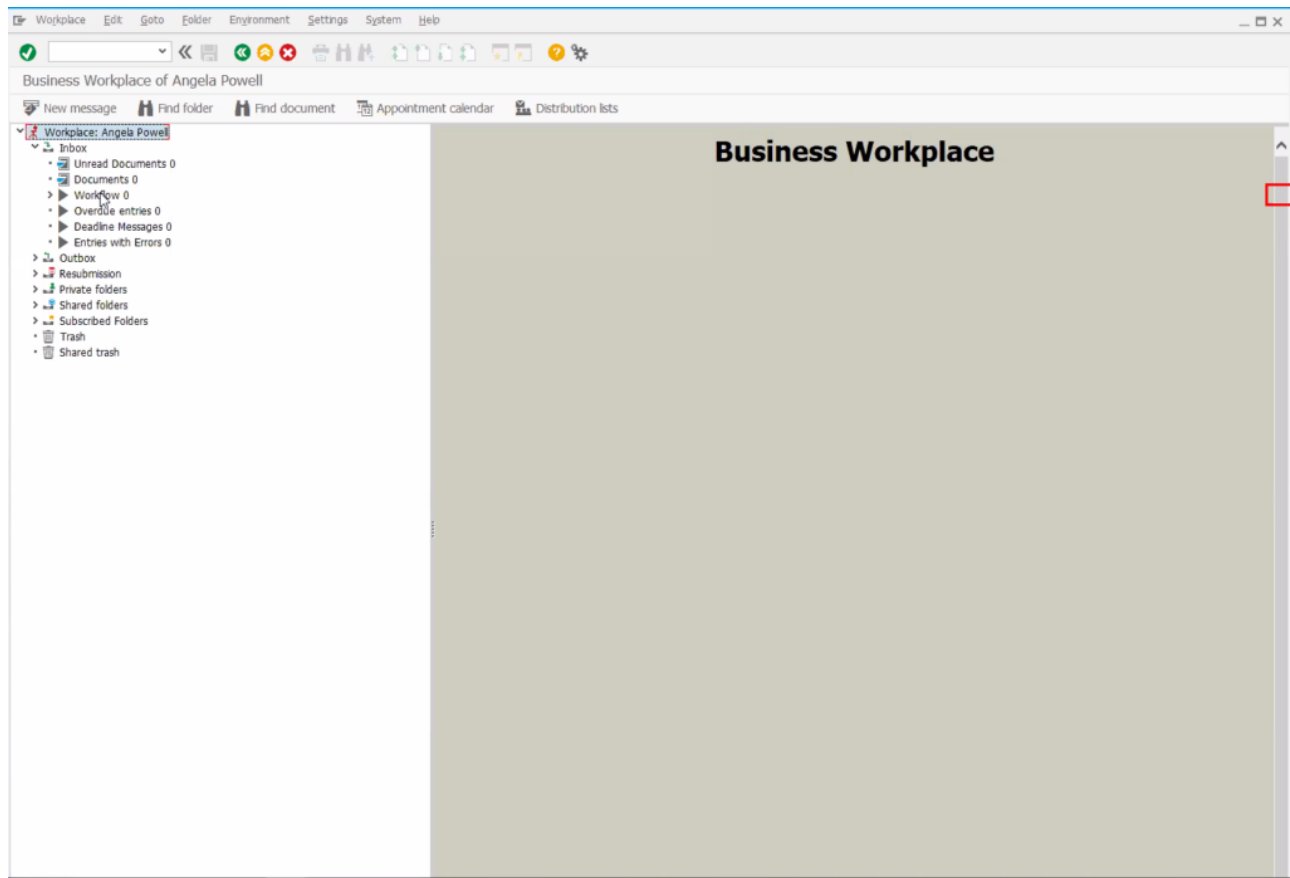


SAP Easy Access Tree

- The capturing will use the text of the shortcut in order to recognize the location (Any change to the text by the user will make the step to not appear)



Business Workplace Screen - Not Supported



Hover or enters the field/button - Not Supported

Material Data
SmartTip Options
Enabled

Interaction
Appearance
Notes

Interaction

Guidance

(Message)

Rich Text Editor

Material Data

Display message when user:

☐ Hovers over icon
☒ Hovers or enters the field / button (no icon)

Style

Guidance text is displayed here

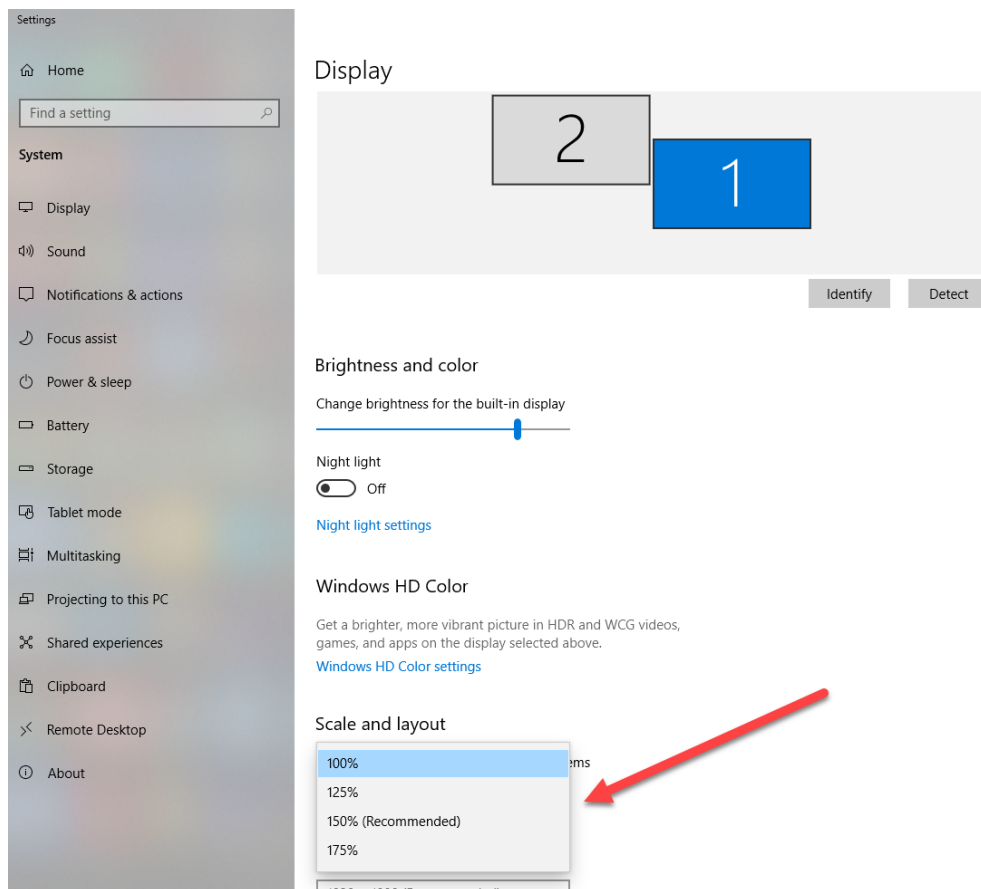
Field

Edit this style

Edit on Page
View SmartTip
Re-select element
Cancel
Done

DPI Changes is Supported with limitations

- A manual offset of WM components is not be supported across different DPI.
- Setting manual offset while capturing with a specific DPI will only work on that DPI



Screenshot Balloon Shift

- Balloons Screenshot may appear shifted when capturing with Text size different than 100%

