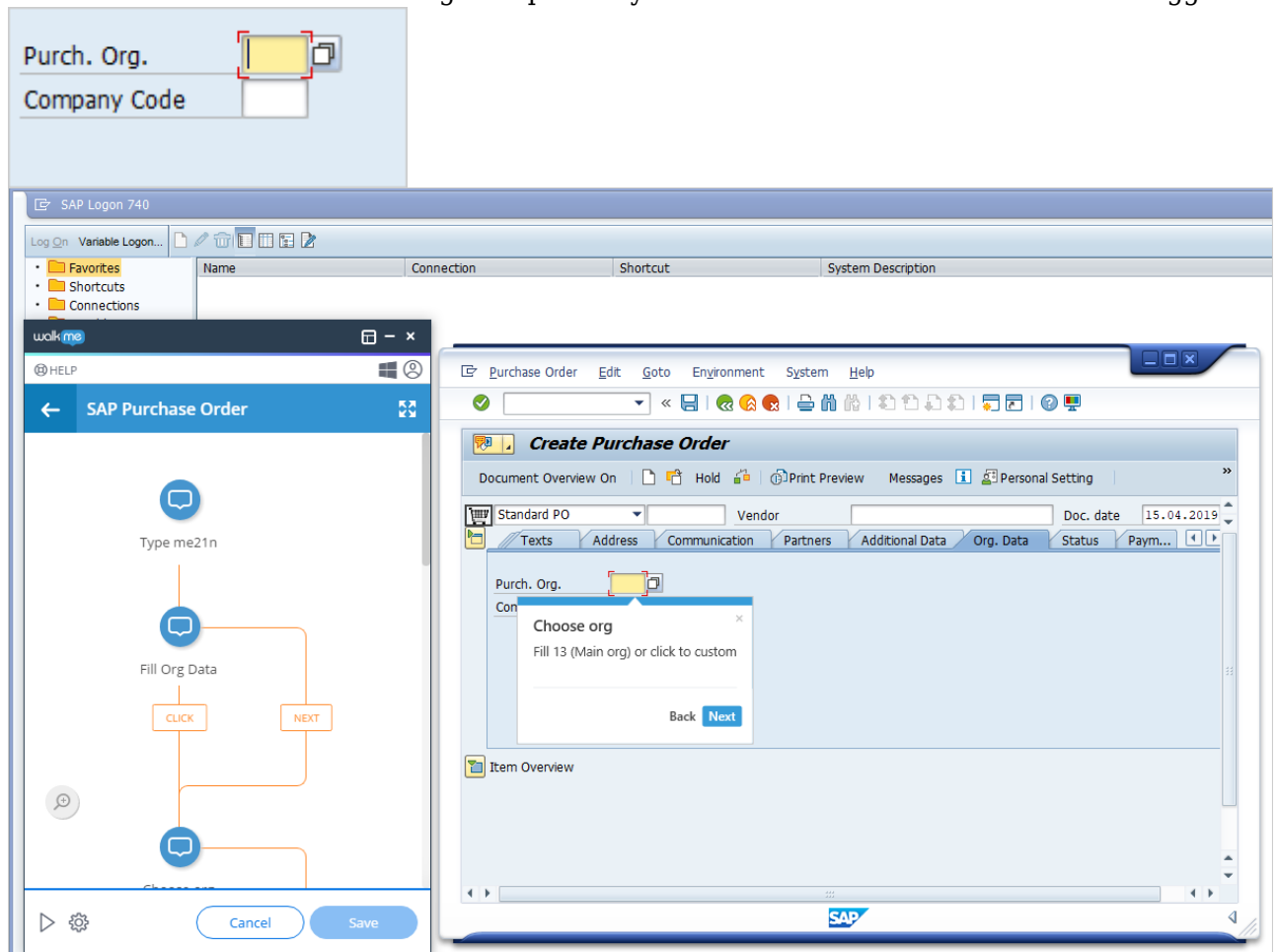


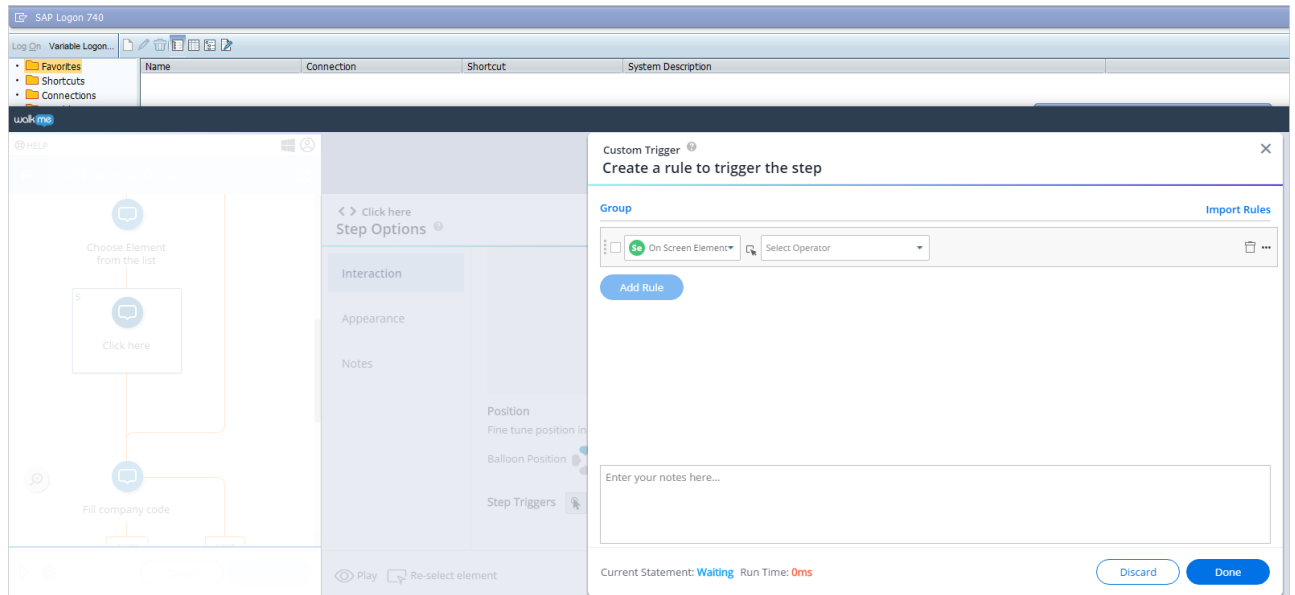
# Best Practices for Building Desktop for SAP

## Best Practices

- Using a **Click** trigger with a text field, (shown as the small element next to the element) to continue the workflow. This is a good option if you want to use a textbox click as the trigger:



- To identify a window was closed, you can create a custom trigger with the condition: **element exists = false** to check that the window no longer exists:



- Many of the processes, when using SAP ERP are done using transaction codes, a good option here is to use the **Submitting the Form trigger** as opposed to an ordinary text trigger, this will wait for the user to click enter before continuing:

