

WalkMe Editor Features

Brief Overview

Learn about the features available in your WalkMe Editor!

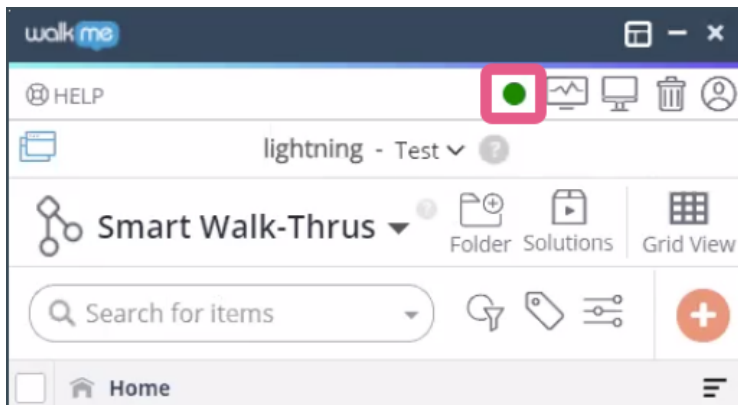
The WalkMe Editor is used for building, managing, and publishing Smart Walk-Thrus and the other WalkMe Apps. Once the Editor is installed on your computer, simply download the Extension to your selected Browser to start building.

For more detailed guidance on how to install WalkMe Editor, please follow the instructions in our [Support article](#).

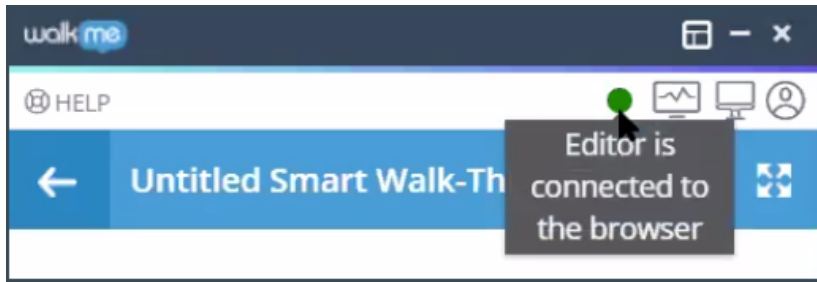
Learn about the [Editor Experience](#)

Editor Connection Indicator

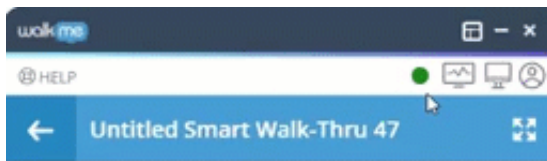
When you are ready to begin building your WalkMe solutions, it is important to make sure that the Editor is connected to your browser, this enables you to capture elements on the screen successfully and use them in your build.



Use the WalkMe Connection Indicator to make sure that you are connected at all times. If the Indicator is green, you are connected:



If the indicator is red, you are not connected:



If you are not able to connect, it is recommended to double-check your [configurations](#) and restart. If you are still experiencing problems, contact our Support team.

Refreshing the Editor Application

It is now possible to refresh the Editor with the following button at the top of the Editor:

