

# Enabling Scripts for SAP

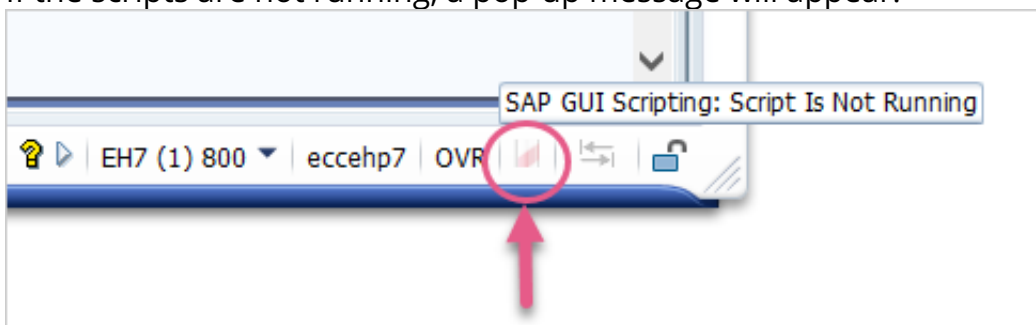
## Brief Overview

Walkme Desktop uses SAP scripts to access and play guidance content on SAP environment.

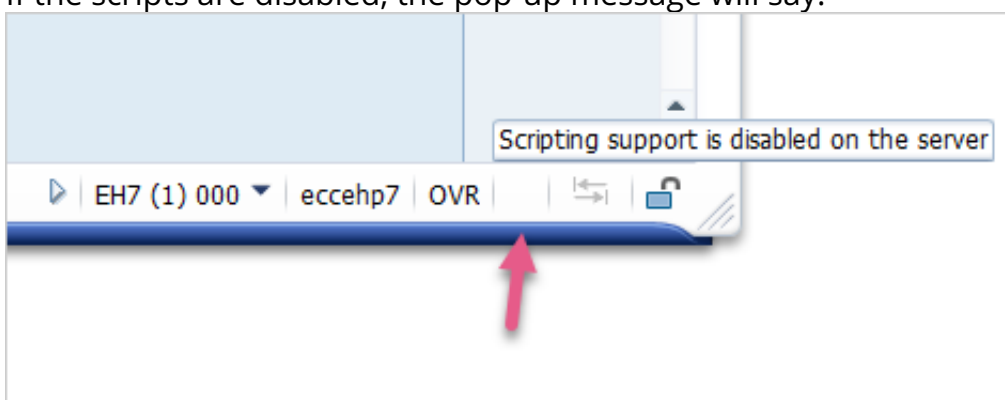
These scripts need to be enabled from the client side and server side in order for Walkme to work.

## How to check if scripts are enabled

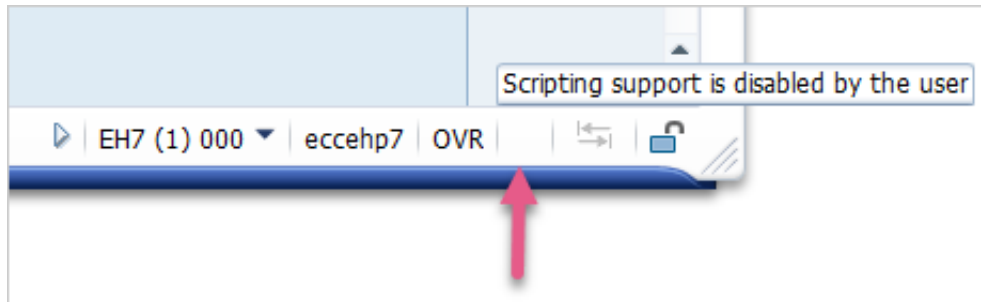
- Hover over the icon (highlighted below) or the area where it is supposed to appear.
- If the scripts are not running, a pop-up message will appear:



- If the scripts are disabled, the pop-up message will say:



- If the scripts are disabled on the client side, the pop-up message will say:



If you don't see any of the icons, click on the triangle to expand the icons bar:

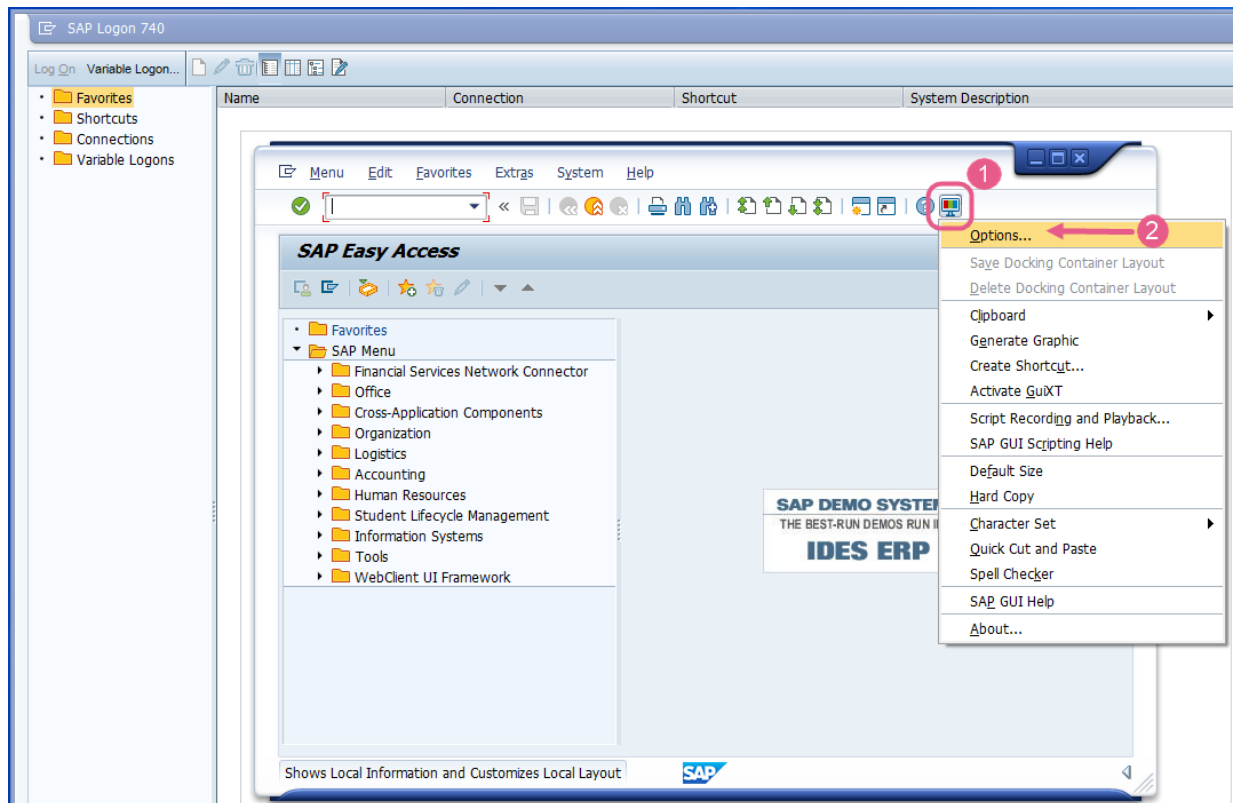


## Enabling scripts on the Client side

Scripts need to be enabled on the end user side. When deploying, this can be done by the SAP admin.

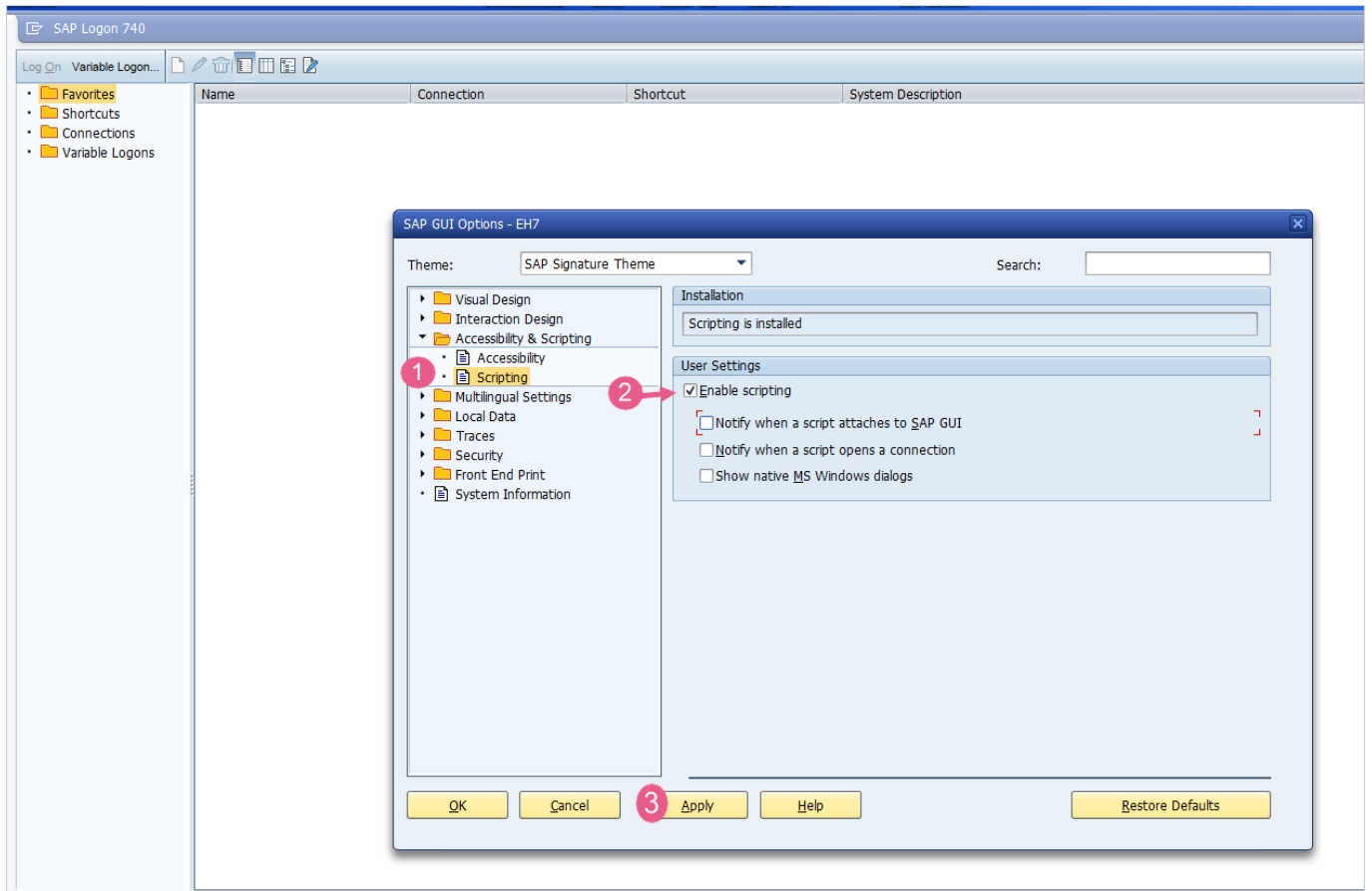
To access the Menu:

- Click the Settings Icon in the top right corner
- Click Options:



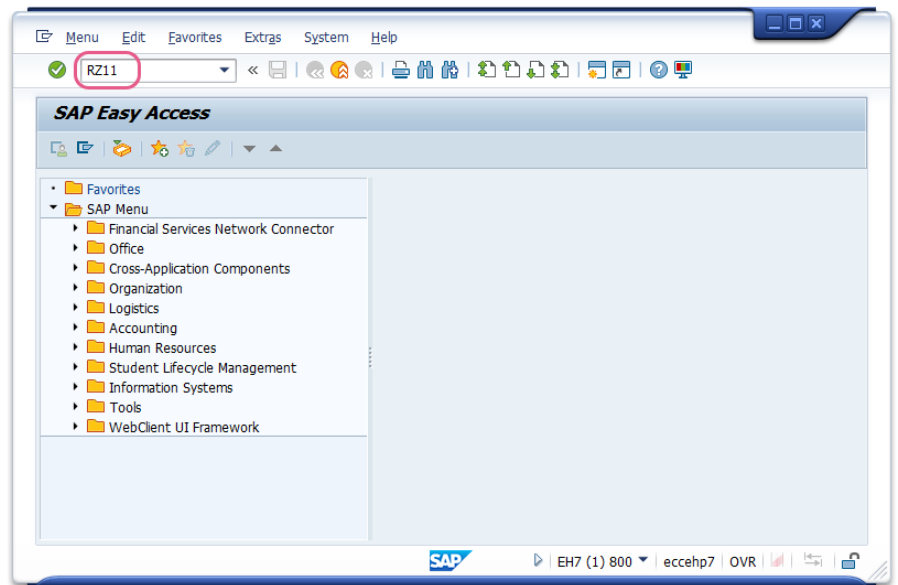
To enable scripts:

- Select Scripting under the Accessibility & scripting folder
- select Enable scripting, checkbox.
- Click apply.



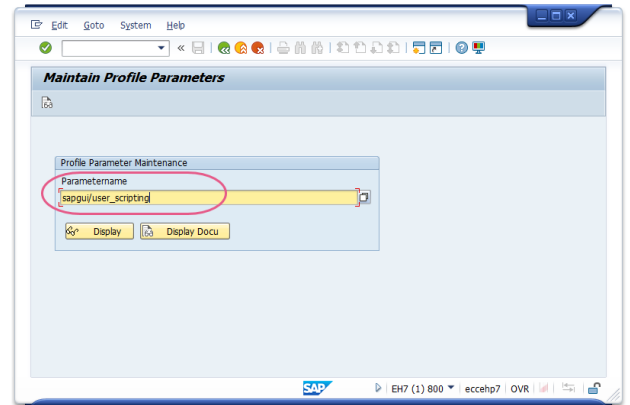
## Enabling SAP GUI Scripting on the Server Side

- Launch saplogon.exe, log in to your SAP server using your credentials. The SAP Easy Access window opens.

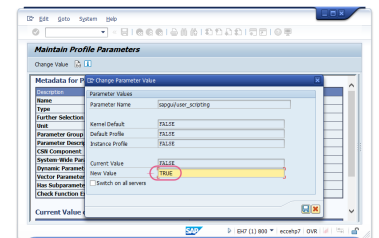


- Specify the parameter name `sapgui/user_scripting` and press Enter on the

- Run transaction RZ11.



- In the Display Profile Parameter Attributes window, press the Change Value button on the toolbar and set the New



- Log off and back on again to see the change into effect, as it does not apply to sessions that are currently running.

Note: keyboard or Display in the SAP interface.

The status bar message "Parameter name is unknown" refers to the fact that the sapgui/user\_scripting parameter cannot be changed using this transaction because a SAP server package is missing. Install the missing package, and try again.

value of sapgui/user\_scripting to TRUE. Save the changes.