

WalkMe Menu Overview

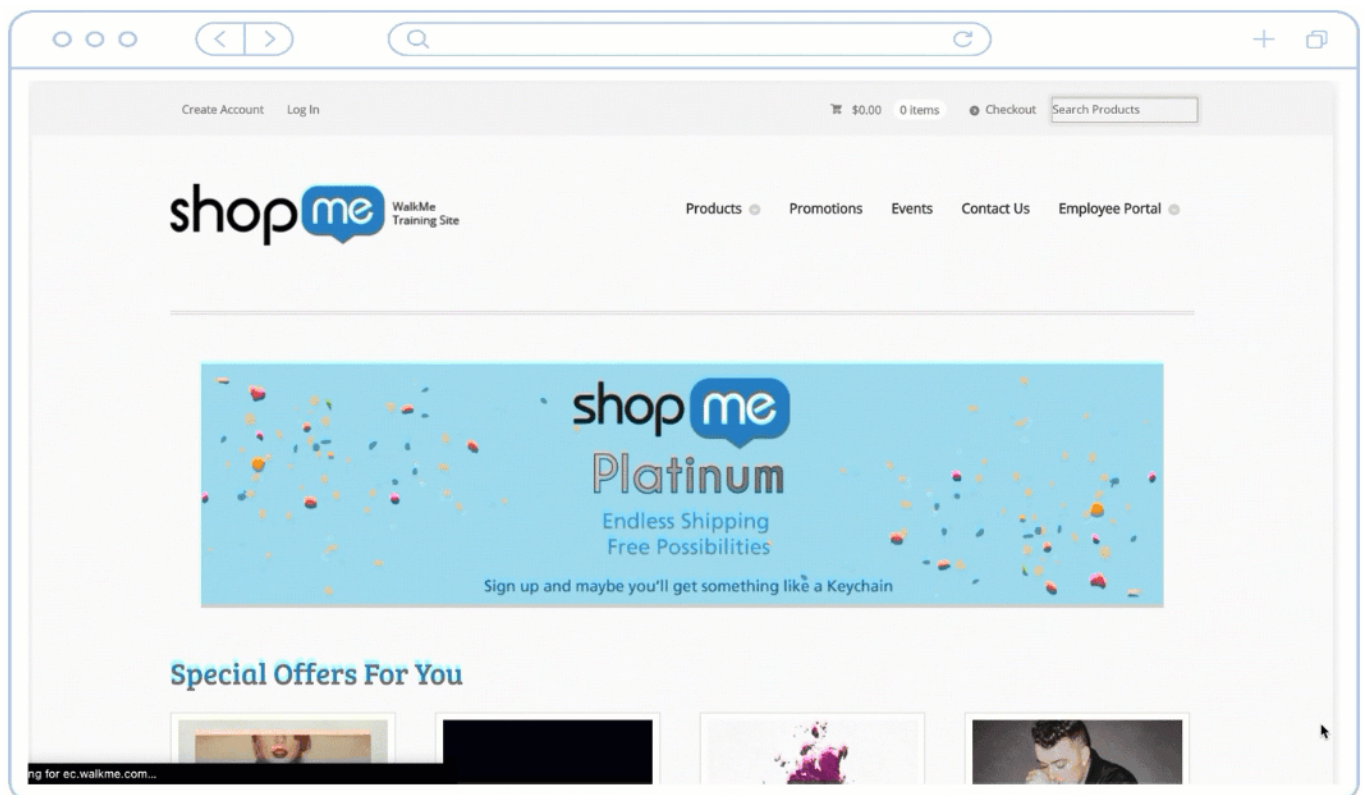
Brief Overview

The WalkMe Menu gives your users one access point to important content, including [Smart Walk-Thru](#), [resources](#), and [shuttles](#).

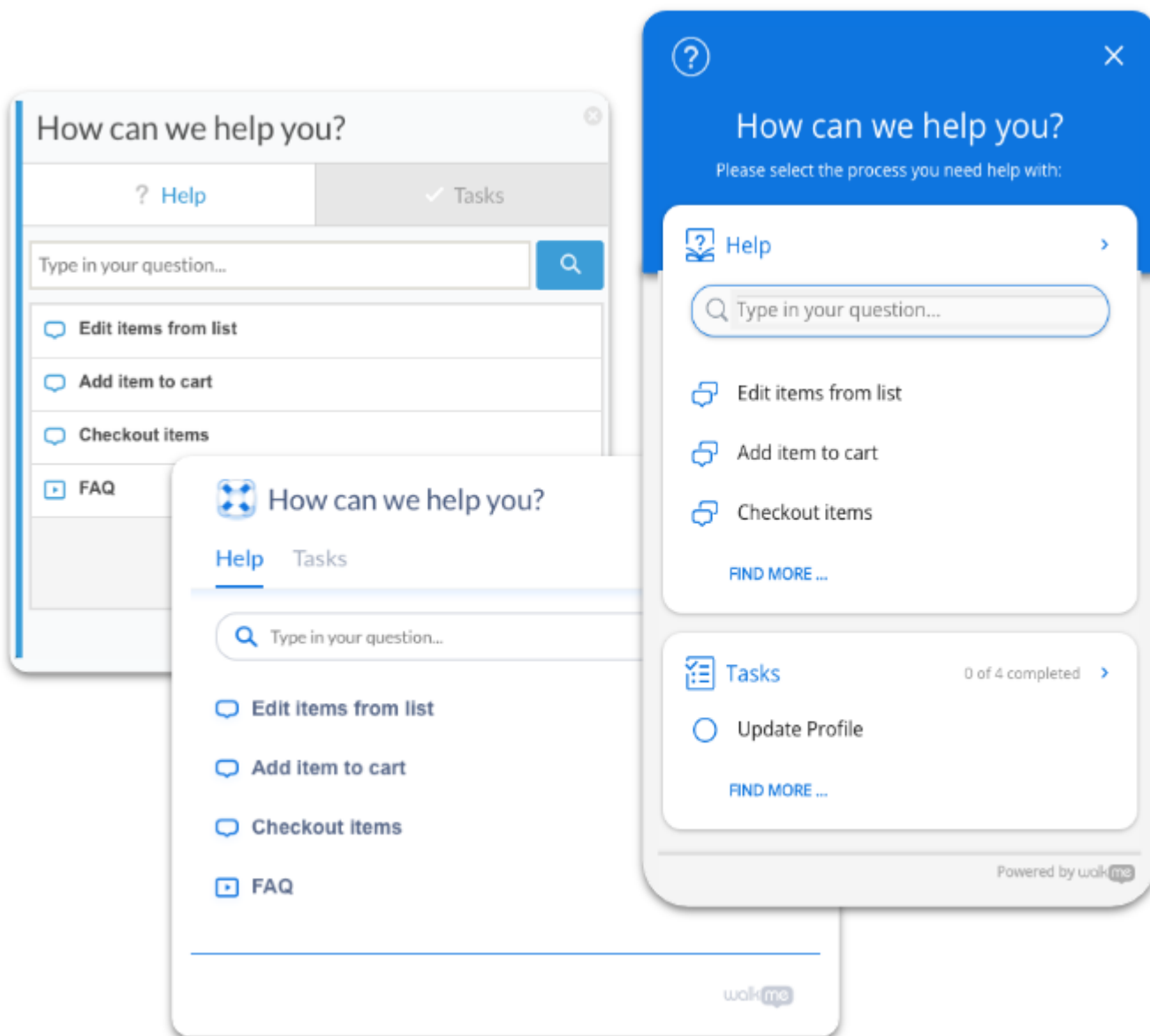
The Menu contains tabs that list your content or [onboarding tasks](#).

- **Menu** refers to the list of tasks and content visible to your users.
- **Widget** refers to the icon that opens the Menu.
- Together, the Widget and Menu make up the **WalkMe Menu**.

The WalkMe Menu is built using the [Menu Organizer](#), which is accessed on the WalkMe Console.



The Menu contains a list of Smart Walk-Thrus and Resources, as well as an [Onboarding Task](#) list.



Choose between three menu styles

Use Cases

Accelerate Training

Give users a clear and straightforward path to complete training. For example, create a task list with all tasks necessary for a new employee to get started such as creating a profile, reading about company policies, signing up for HR benefits, and setting up an expense account.

Improve Conversion

End customer confusion and make your product attractive and simple. For example, create a checklist that shows off your product's features and drives customers to action.

Promote Product Adoption

Enhance the customer experience and increase loyalty by boosting engagement with your site. For example, create a checklist that takes the user through all the necessary processes to get started.

How to Build

For an **overview** of the **Menu Organizer**, check out [this article](#).

If you're ready to start building your menu, the [WalkMe Menu: Getting Started Guide](#) has step-by-step instructions on how to **build and customize** your WalkMe Menu.

To create a **checklist for training** purposes that can be access on the menu, check out the [Onboarding Tasks: Getting Started Guide](#).

□ Digital Adoption Institute

- View the [Menu Organizer](#) course in the DAI
- Don't have a DAI account yet? [Sign up here](#)